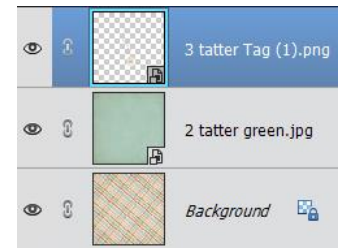


Tattered Edges with a Waxy Crayon Brush

10/26/2020

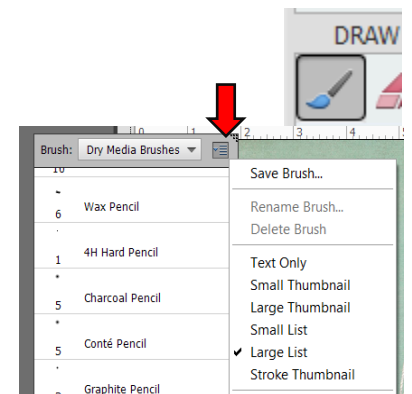
Step 1: Prepare the Workspace

1. Select 3 pictures you would like to use. Open them and have in your Photo Bin.
2. Open the 4 files I sent you in Elements. Have in Photo Bin.
3. Using the Move Tool drag your '1 tatter plaid' to your work area.
4. Using the Move Tool+Shift Key drag '2 tatter green' onto the 'Plaid'.
5. Using the Move Tool drag '3 tatter tag' onto the 'Plaid' & 'Green'.
6. Press the letter D to reset the Color Chips to the default of black over white.
7. In the Layers panel, click on the Tag layer to make it the active layer.
8. Use Zoom tool to magnify to the bottom of the tag.



Step 2: Add a Tattered Edge to the Tag

1. Get the Brush tool.
2. In the Tool Options, open the Brush Picker and choose the Heavy Smear Wax Crayon brush from the Dry Media Brushes. (5th from the bottom)
3. If you don't see the Heavy Smear Wax Crayon brush, open flyout menu and choose Large List. (red arrow)
4. In the Tool Options, set the Size to 50 px, the Mode to Normal, and the Opacity to 100%.
5. In the Layers panel, click on the Add Layer Mask icon.
6. The Foreground Color Chip should still be black, if it's not, press the letter X.
7. On the document, click and drag across the bottom edge of the tag.
8. To redo, press Ctrl Z (Mac: Cmd Z) to undo and then try again.



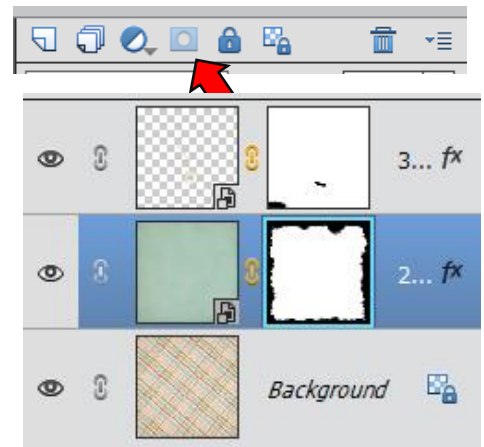
Step 3: Check for Stray Pixels

1. In the Menu Bar, choose Layer > Layer Style > Style Settings.
2. Click on Stroke to open the settings.
3. Set the Size to 1 px, the Position to Outside, and the Opacity to 100%.
4. Click on the Stroke Color Chip to open the Color Picker. Choose red and click OK.
5. The red stroke outline will highlight stray pixels. Use a Hard Round brush to mask them.
6. Get the Brush tool.
7. In the Tool Options, open the Brush Picker and choose the Hard Round brush from the Default Brushes.

8. If you don't see the Hard Round brush, open the flyout menu and choose Large List.
9. In the Tool Options, set the Size to 10 px, the Mode to Normal, and the Opacity to 100%.
10. In the Layers panel, click on the layer mask to make sure it's still active. (cyan around)
11. On the document, click and drag to remove stray pixels.
12. Press the Left Bracket key a few times to make the brush smaller then remove stray pixels closer to the edge of the tag.
13. When done in the Menu Bar, choose Layer > Layer Style > Style Settings unclick the Outline, DO NOT CLICK OK.
14. Click on Drop shadow, Set the Size to 10, Distance to 15, Opacity to 50% OK
15. Press Ctrl 0 (Mac: Cmd 0) to fit the image to your screen.

Step 4: Add Tattered Edge to 'Green' Layer

1. Follow steps 1-4 from Step 2. Except size to 200.
2. Activate the 'green' layer.
3. In the Layers panel, click on the Add Layer Mask icon.
4. The Foreground Color Chip should still be black, if it's not, press the letter X.
5. On the document, click and drag all around the edges of the paper. Do in small segments so if need to redo it will only be part of the work.
6. To redo, press Ctrl Z (Mac: Cmd Z) to undo and then try again.
7. We are leaving the extra pixels.
8. In the Menu Bar, choose Layer > Layer Style > Style Settings > Drop Shadow
9. Set the Size to 10, Distance to 15, Opacity to 50% OK



Step 5: Add Frames & Photo Layers for pictures

1. Using your Move tool drag the frame up from the Photo Bin to work area. (not creation)
2. Select both layers and use your move tool to move to the creation.
3. Repeat step 2 for as many pictures as you want to display.
4. Use Move tool to position/size.
5. In the layer panel activate one of the Photo layers
6. Use your Move Tool to drag one of your pictures to the creation. The frame will be there to help you position/size.
7. When done in the Menu Bar, choose Layer > Create Clipping Mask.

Step 6: Save

1. Save the creation (File > Save As) as a layered Tif file with a unique name.
2. Save the creation (File > Save As) a JPG file.
3. If for Web: File > Save for Web Make adjustments based on what you need.